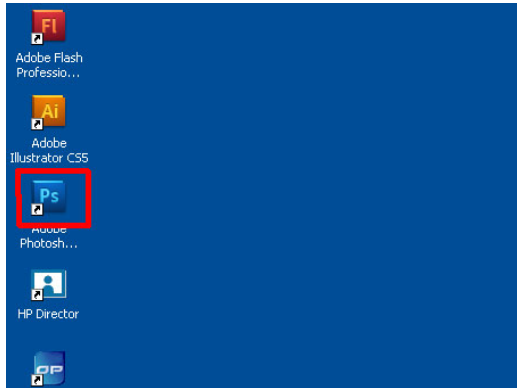
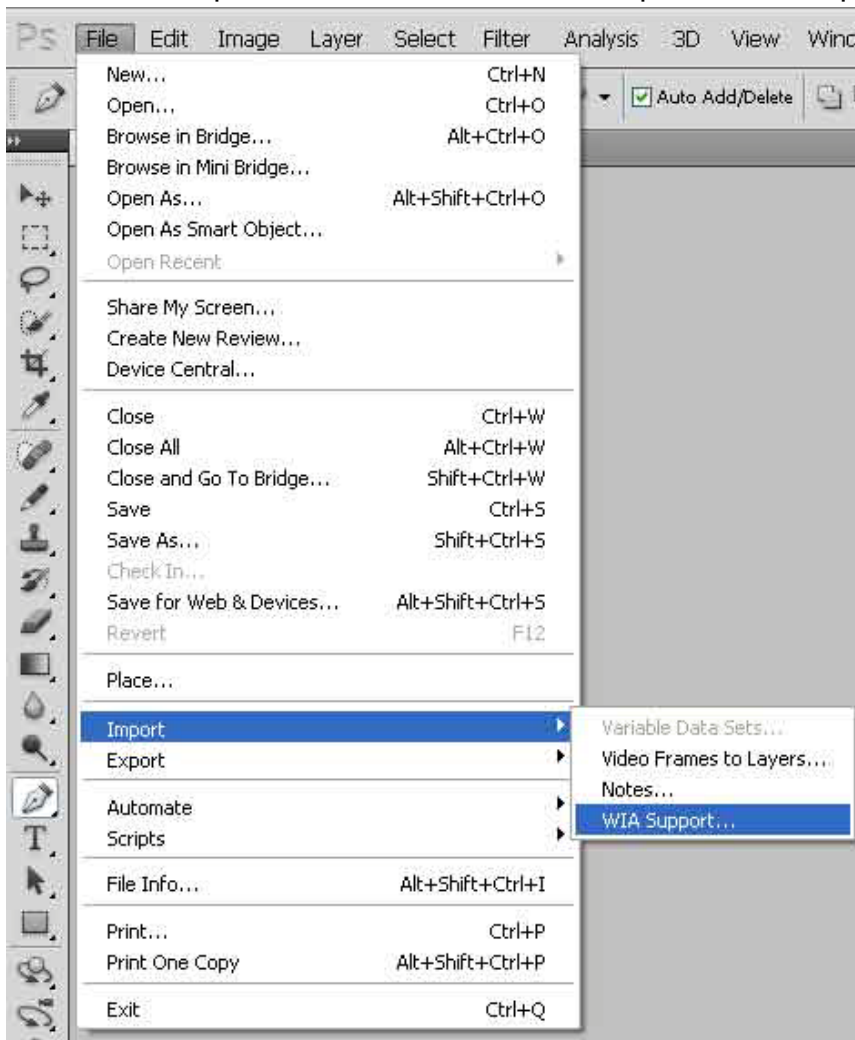


Scanning Photograph or Documents using Photoshop CS5

1. Double click on the Adobe Photoshop CS5 shortcut on the desktop as shown:



2. After Photoshop have started, click “File > Import > WIA Support...” as shown :



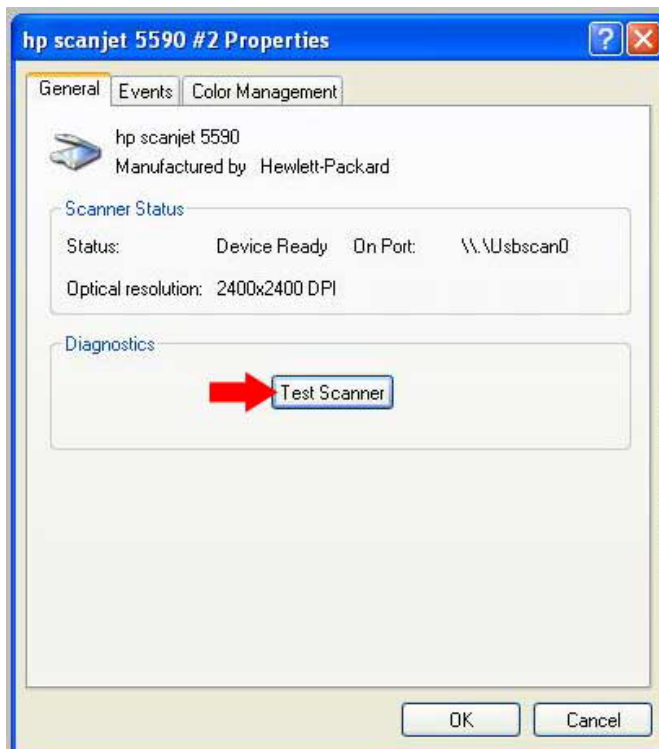
3. Once you have click “WIA Support...”, a window will pop out as shown, click “**Start**” as shown:



4. Click the highlighted scanner “HP scanjet #2” as shown and click the “Properties” button:



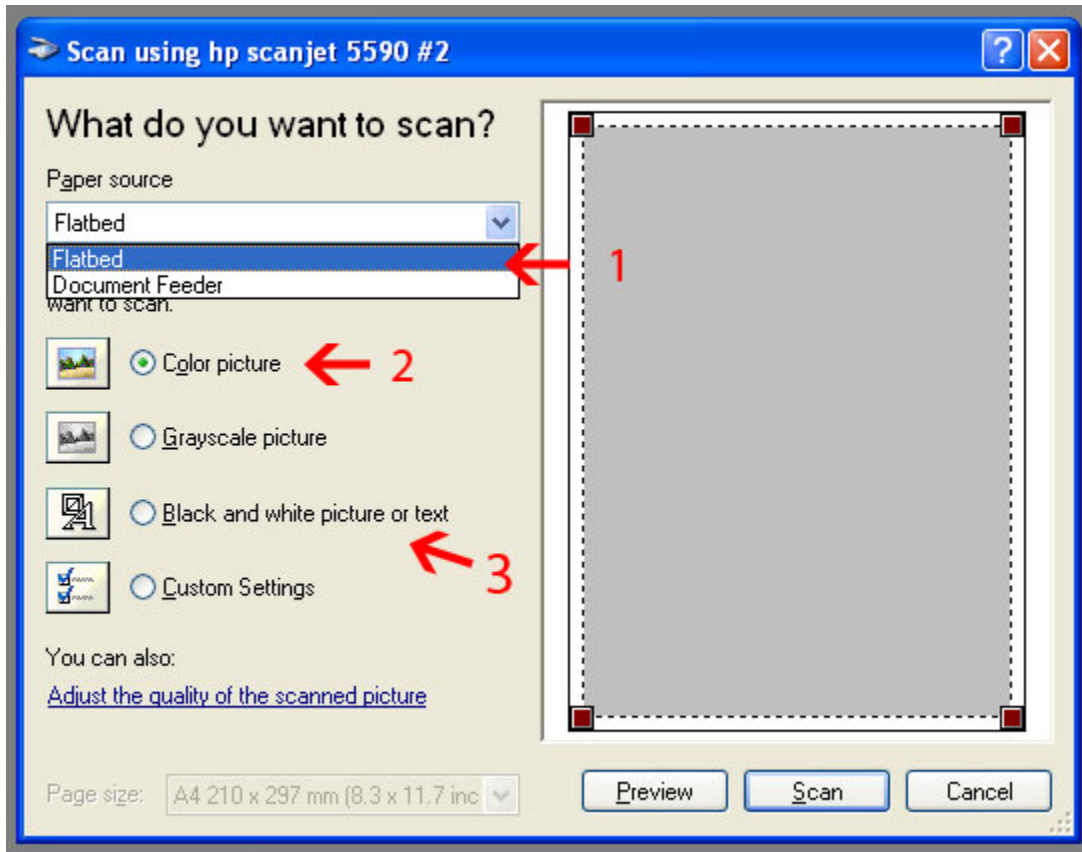
5. Click the “**Test Scanner**” button to test the scanner:



6. If the scanner is functioning properly a window will pop up as shown:



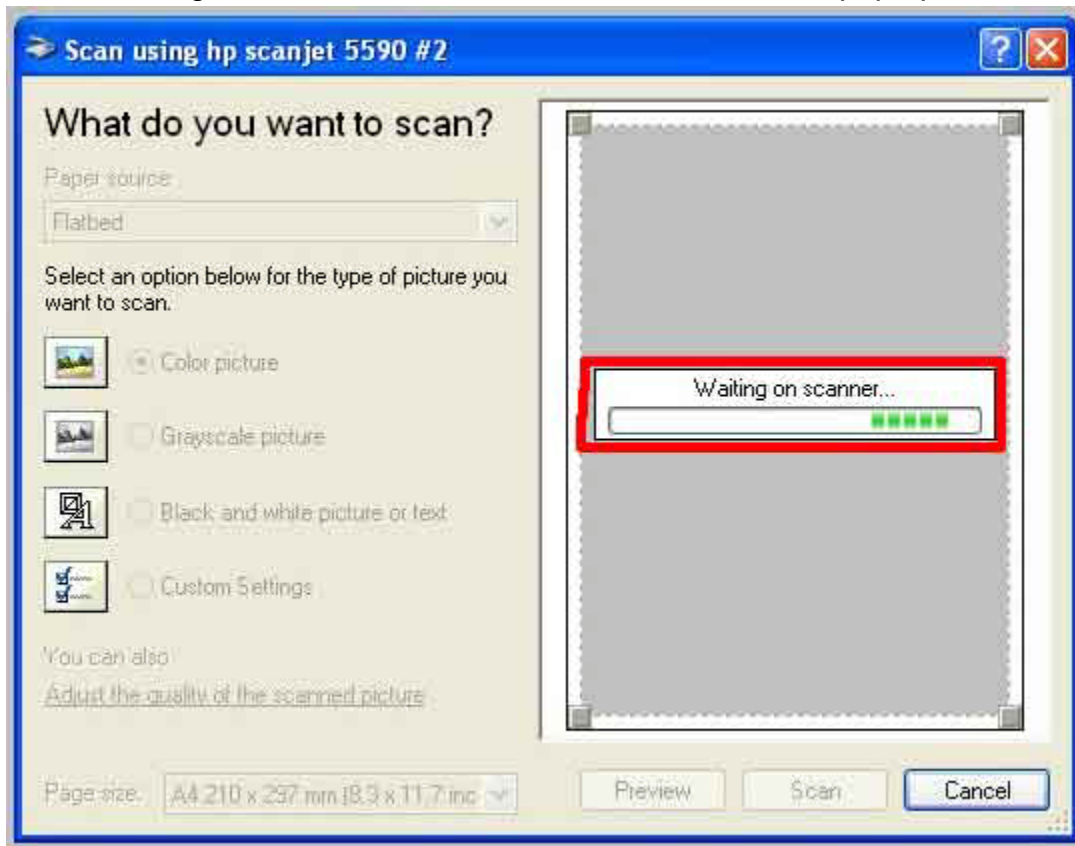
7. Click "Ok" on the window, and "Ok" on the previous window in step-4, a scan window will pop up as shown below:



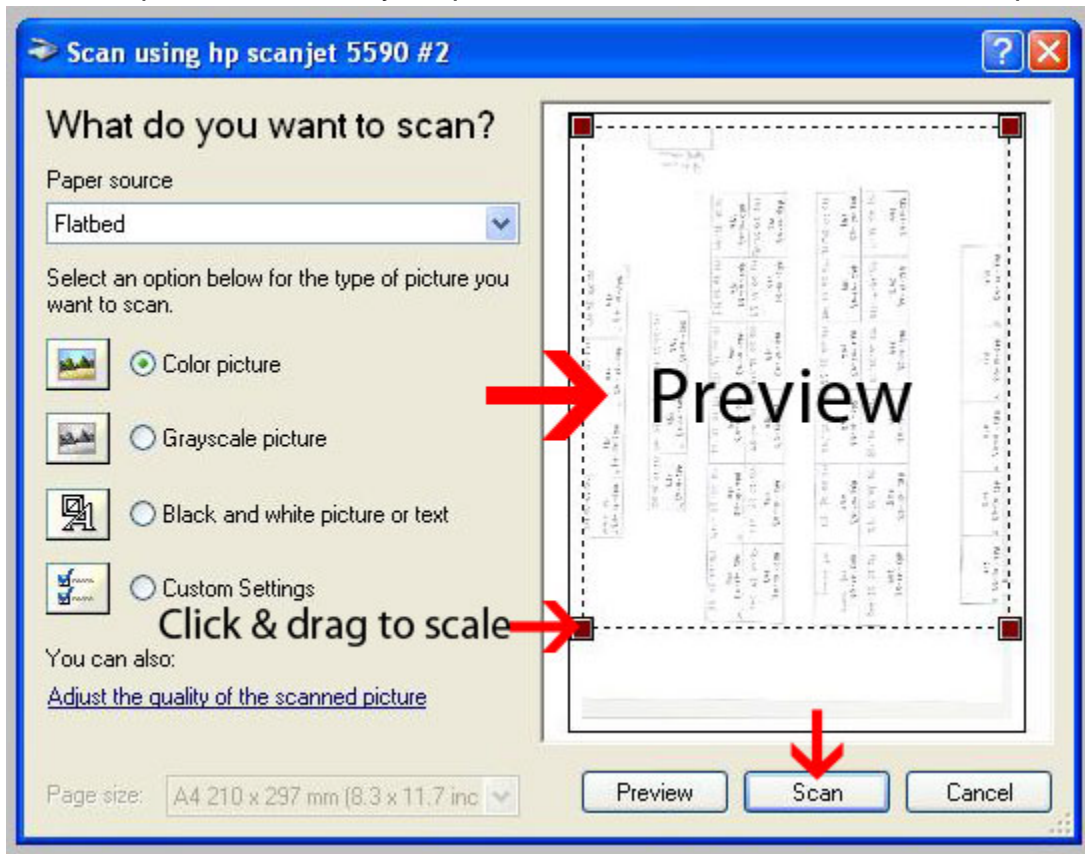
8. Chose the mode that you are comfortable with:

- i. Chose "Flatbed", if you are manually scanning the document
- ii. Chose "Document Feeder", if you have multiple document
- iii. Select the setting, use color picture for photo or Black and White for text.
- iv. Take note that, if you are using document feeder there will be no preview**

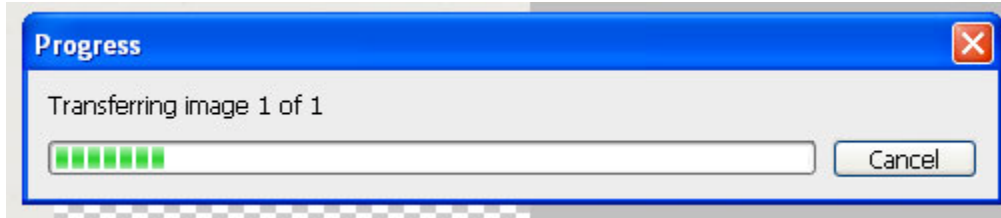
9. After choosing the mode, click the “Preview”, a window will pop up as shown:



10. Once the preview is done, your photo or document will be shown in the preview area.



11. Click the brown little square as shown to scale the area you want to scan, once you are scale and selected the area you want, click the “**Scan**” button to scan the document, a window will pop out showing the progress of the scan.



12. Once the scan is completed, the scanned document will be display on the main window of Photoshop.

